

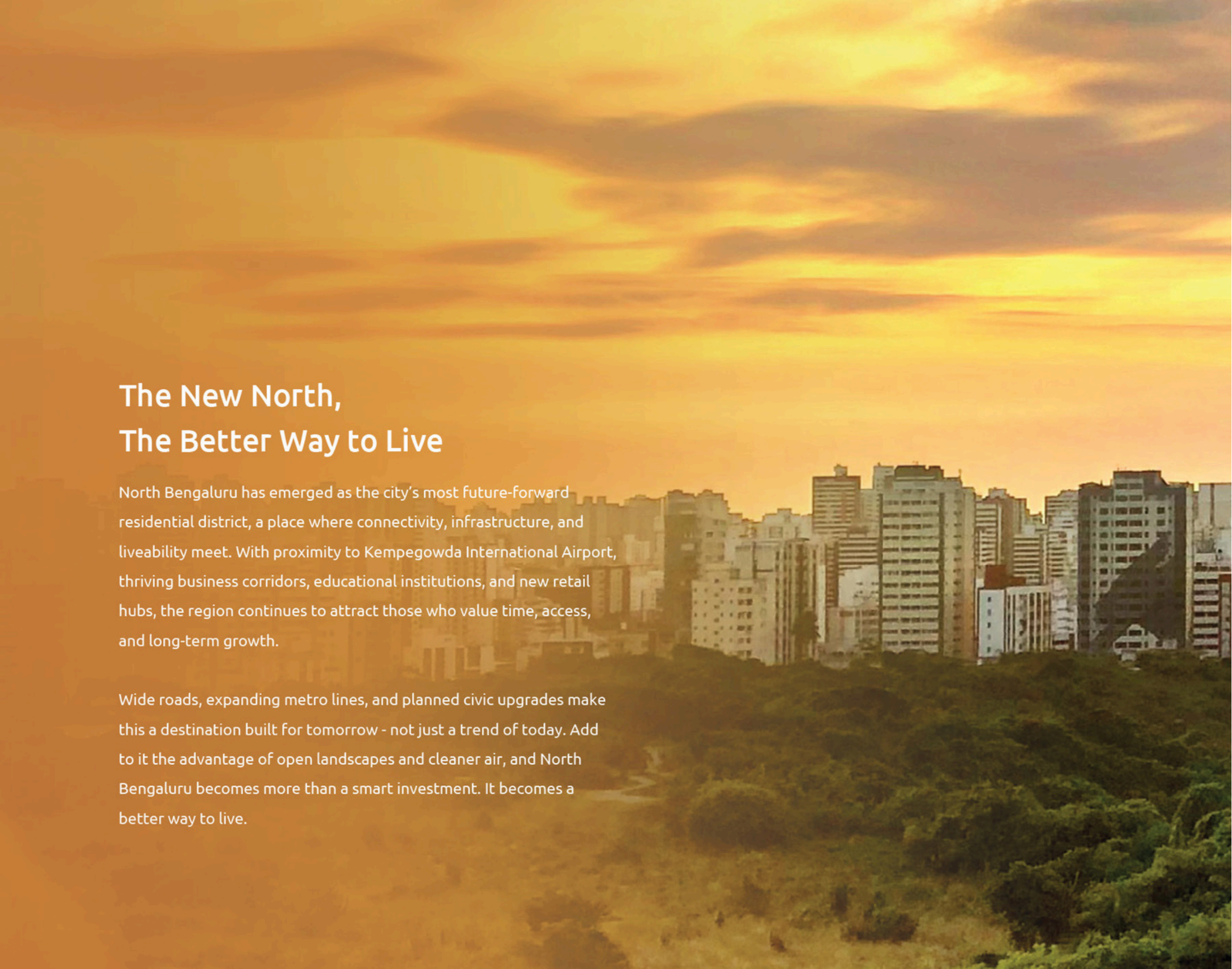


**EMBASSY**  
**GREENSHORE**



Artist's Impression

LIFE FLOWS *Differently here*

The background image is a photograph of a city skyline at sunset. The sky is filled with warm, orange and yellow clouds. In the foreground, there is a dense, green forest. The city buildings are visible in the middle ground, silhouetted against the bright sky.

## The New North, The Better Way to Live

North Bengaluru has emerged as the city's most future-forward residential district, a place where connectivity, infrastructure, and liveability meet. With proximity to Kempegowda International Airport, thriving business corridors, educational institutions, and new retail hubs, the region continues to attract those who value time, access, and long-term growth.

Wide roads, expanding metro lines, and planned civic upgrades make this a destination built for tomorrow - not just a trend of today. Add to it the advantage of open landscapes and cleaner air, and North Bengaluru becomes more than a smart investment. It becomes a better way to live.







EMBASSY  
SPRINGS

## A Masterplan for Happiness

Amid the pace of modern life, we often long for places that restore ease, a sense of belonging, and balance.

Embassy Springs was created with that simple idea: that happiness isn't found in fleeting moments, but in the way we live every day.

Spread across 288 acres, Embassy Springs is North Bengaluru's biggest and best-planned city. It is a self-contained ecosystem of homes, school, parks, lakes, and community spaces, all designed to make life effortless.

Here, you don't travel to find peace. You simply come home to it.



Artist's Impression



## Life flows differently here

Set beside a natural lake and surrounded by expansive open spaces, Embassy Greenshore brings a new rhythm to urban living. One that is calmer, more open, and beautifully connected to its surroundings.

Spread across 14 acres, this premium residential enclave features 8 towers and 878 spacious apartments, thoughtfully designed to maximise natural light, fresh air, and uninterrupted views. With large format 2, 3, and 4 BHK homes and seamless access to township conveniences, every day here feels peaceful and thoughtfully curated.

At Embassy Greenshore, the stillness of water meets the comfort of well planned spaces, creating a life that truly flows differently.

## Homes Made for Light, Space, and Stillness

Every apartment at Embassy Greenshore is crafted for those who seek clarity and calm. Generous room sizes, intelligent layouts, and smooth spatial transitions create a living experience that feels naturally bright, open, and harmonious.

Lake facing homes, spacious balconies, and cross ventilated interiors welcome natural elements without compromising privacy or comfort. From the arrival experience to the finest finishing details, every aspect reflects a commitment to refined and elevated living for those who value both serenity and sophistication.



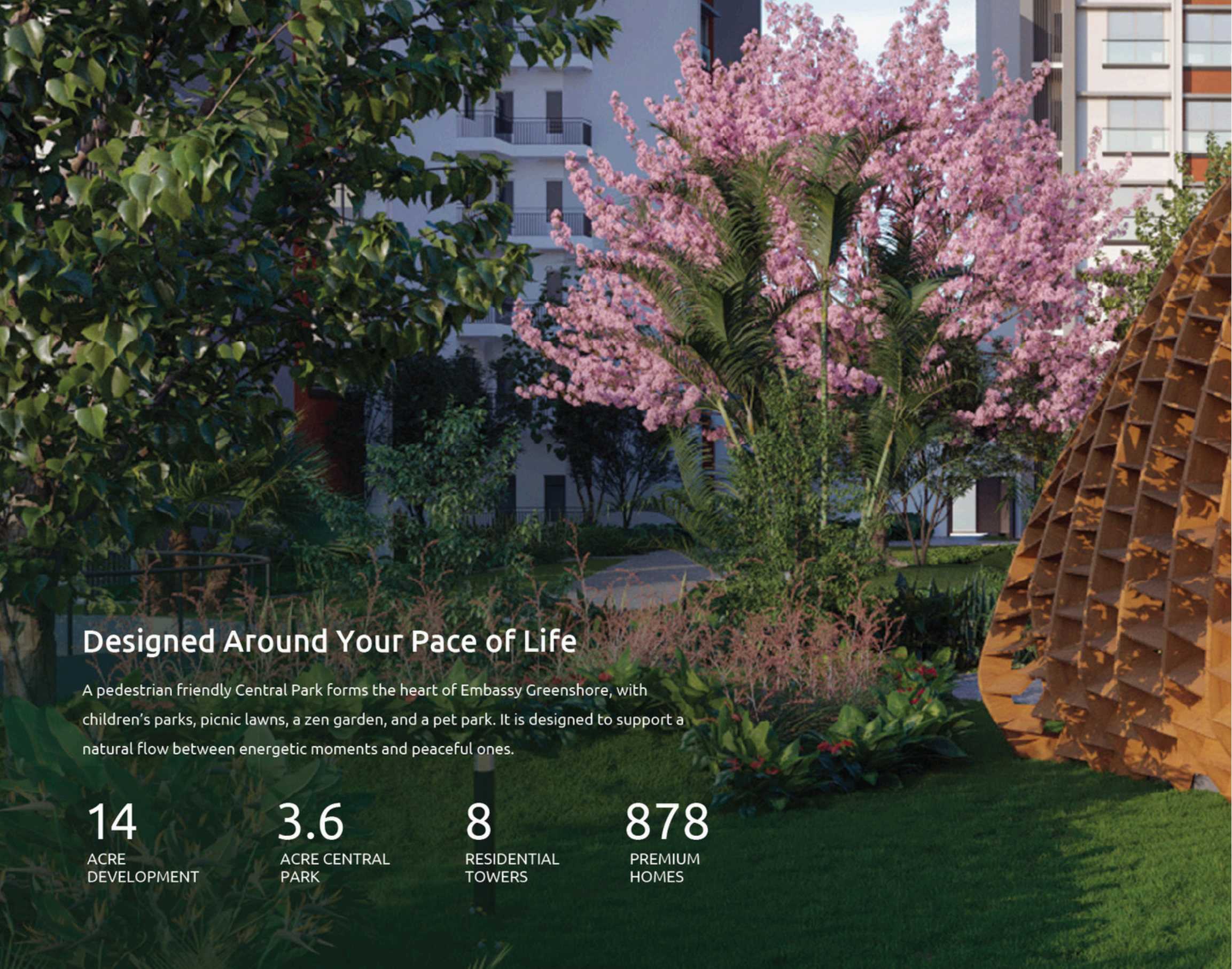




Artist's Impression



FEATURES & AMENITIES



## Designed Around Your Pace of Life

A pedestrian friendly Central Park forms the heart of Embassy Greenshore, with children's parks, picnic lawns, a zen garden, and a pet park. It is designed to support a natural flow between energetic moments and peaceful ones.

14

ACRE  
DEVELOPMENT

3.6

ACRE CENTRAL  
PARK

8

RESIDENTIAL  
TOWERS

878

PREMIUM  
HOMES



# The Podium of Possibilities



Arrival Plaza



Swimming Pool with Pool Deck



Grand Clubhouse

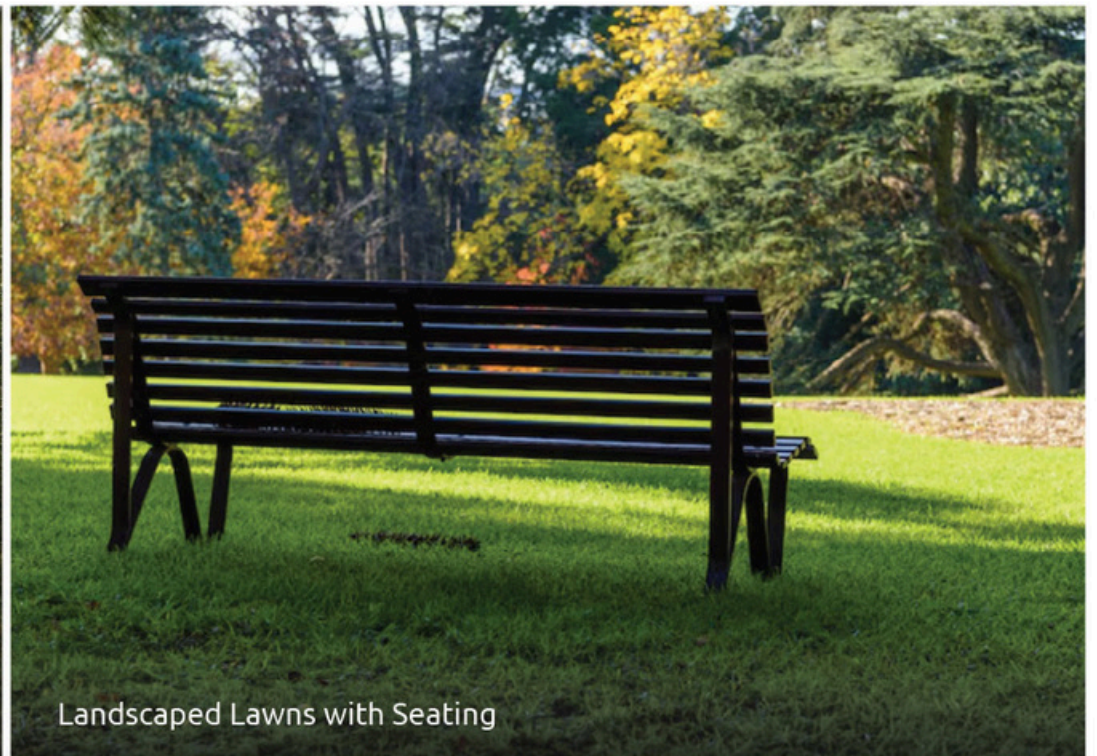


Children's Play Area

Amenities that flow with nature - inviting you to slow down, reconnect, and truly live well, with every space crafted to feel open, calming, and seamlessly in tune with the outdoors.



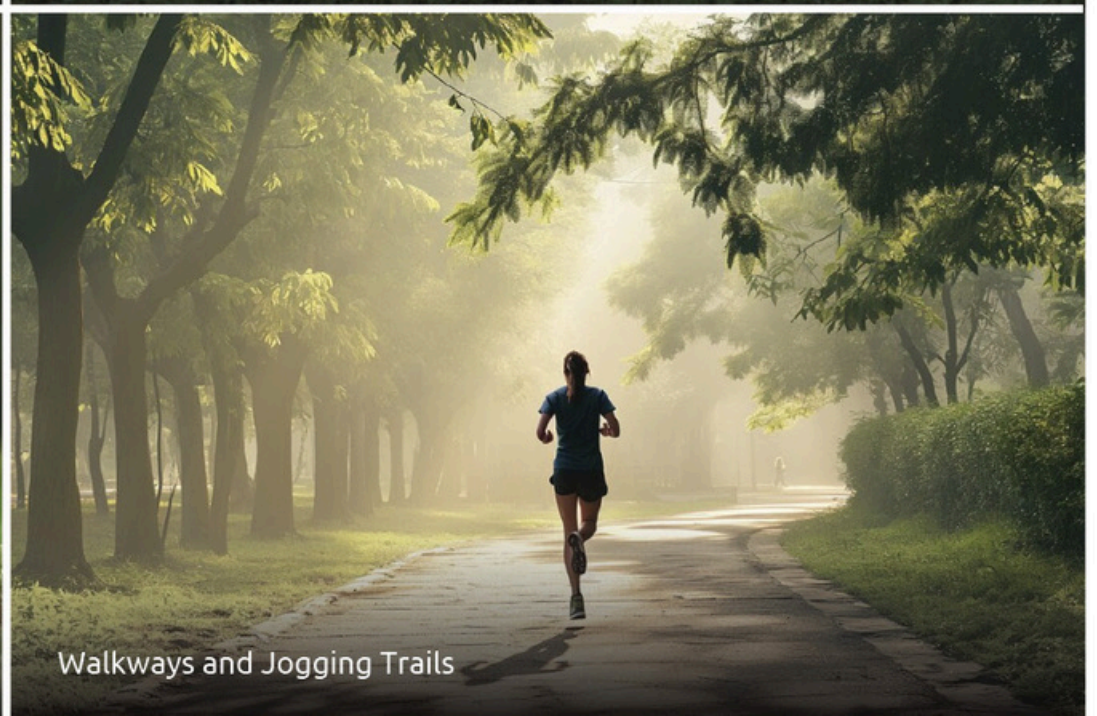
Sports Courts



Landscaped Lawns with Seating



Pet Park



Walkways and Jogging Trails

# MASTERPLAN









# MASTERPLAN

01. ENTRY

02. ARRIVAL PLAZA

03. VIEWING DECK

04. CHILDREN'S PLAY AREA

05. AMPHITHEATER

06. SPORTS COURTS

07. ZEN GARDEN

08. SKATING RINK

09. PET PARK

10. JOGGING TRACK

11. CRICKET PITCH

12. PICNIC LAWNS

13. CELEBRATION LAWN

14. CLUBHOUSE

15. SWIMMING POOL

16. YOGA LAWN

17. SERVICES



# CLUSTER PLANS

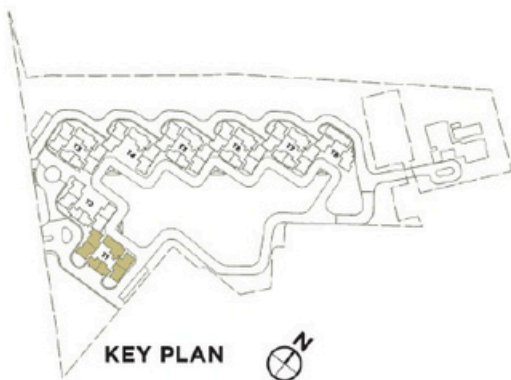
The information and visuals presented herein are artistic impressions and serve as indicative representations, subject to potential alterations by authorities and architects. They are not binding offers or contracts, and EMBASSY DEVELOPMENTS LIMITED or their agents cannot be held liable for any inaccuracies. The promoters retain the prerogative to make necessary changes to the project as required. Please note that kitchens will be delivered as bare shells, with sinks provided in the utility area only. All parties involved are advised to independently verify details and specifications before making any commitments, ensuring transparency and accuracy throughout the project's development.



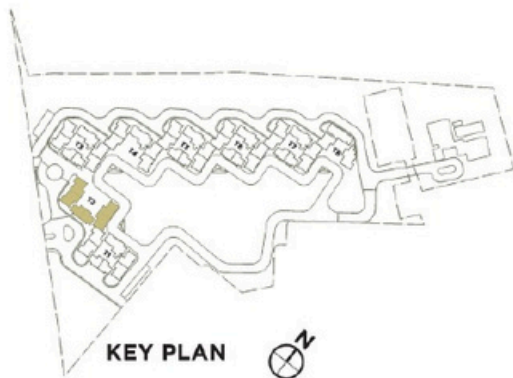
## Designed for Light, Air, and Life

From orientation to spacing, every tower plan is designed to maximize openness and natural light. The thoughtful layout fosters a sense of community while preserving the privacy of each home.

## TOWER T1 TYPICAL FLOOR PLAN



## TOWER T2 TYPICAL FLOOR PLAN



KEY PLAN



## TOWER T3 TYPICAL FLOOR PLAN



## TOWER T4 TYPICAL FLOOR PLAN



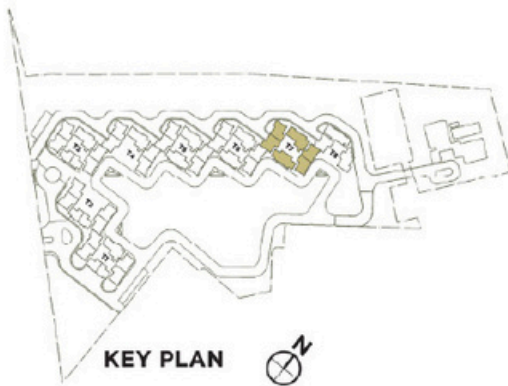


Artist's Impression

## TOWER T5 AND T6 TYPICAL FLOOR PLAN



## TOWER T7 TYPICAL FLOOR PLAN



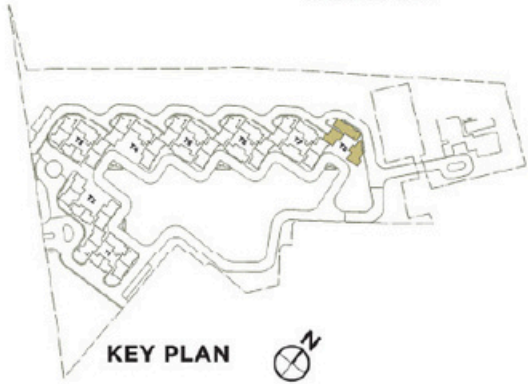
TOWER T8 TYPICAL FLOOR PLAN

4 BHK C3



3 BHK B9

4 BHK C1





# UNIT PLANS

The information and visuals presented herein are artistic impressions and serve as indicative representations, subject to potential alterations by authorities and architects. They are not binding offers or contracts, and EMBASSY DEVELOPMENTS LIMITED or their agents cannot be held liable for any inaccuracies. The promoters retain the prerogative to make necessary changes to the project as required. Please note that kitchens will be delivered as bare shells, with sinks provided in the utility area only. All parties involved are advised to independently verify details and specifications before making any commitments, ensuring transparency and accuracy throughout the project's development.



## Wide Spaces, Well Crafted

Choose from thoughtfully designed 2, 3, and 4 BHK homes with open views, seamless layouts, and abundant light. Each unit is tailored to enhance both

A modern living room interior featuring warm wood paneling on the walls and ceiling. A bright orange sofa is the centerpiece, adorned with several pillows in shades of grey, white, and red. In front of the sofa is a low, round wooden coffee table. To the left, a large window with sheer curtains allows natural light to enter, accompanied by a tall potted plant and a large, textured, light-colored pouf. To the right, a round, patterned pouf sits on a light-colored rug. A long, low wooden shelf with a warm glow underneath holds a few decorative items, including a white vase, a brown bottle, and a small bowl. A circular decorative object hangs on the wall above the shelf. The overall atmosphere is cozy and contemporary.

## 2 B H K R E S I D E N C E S

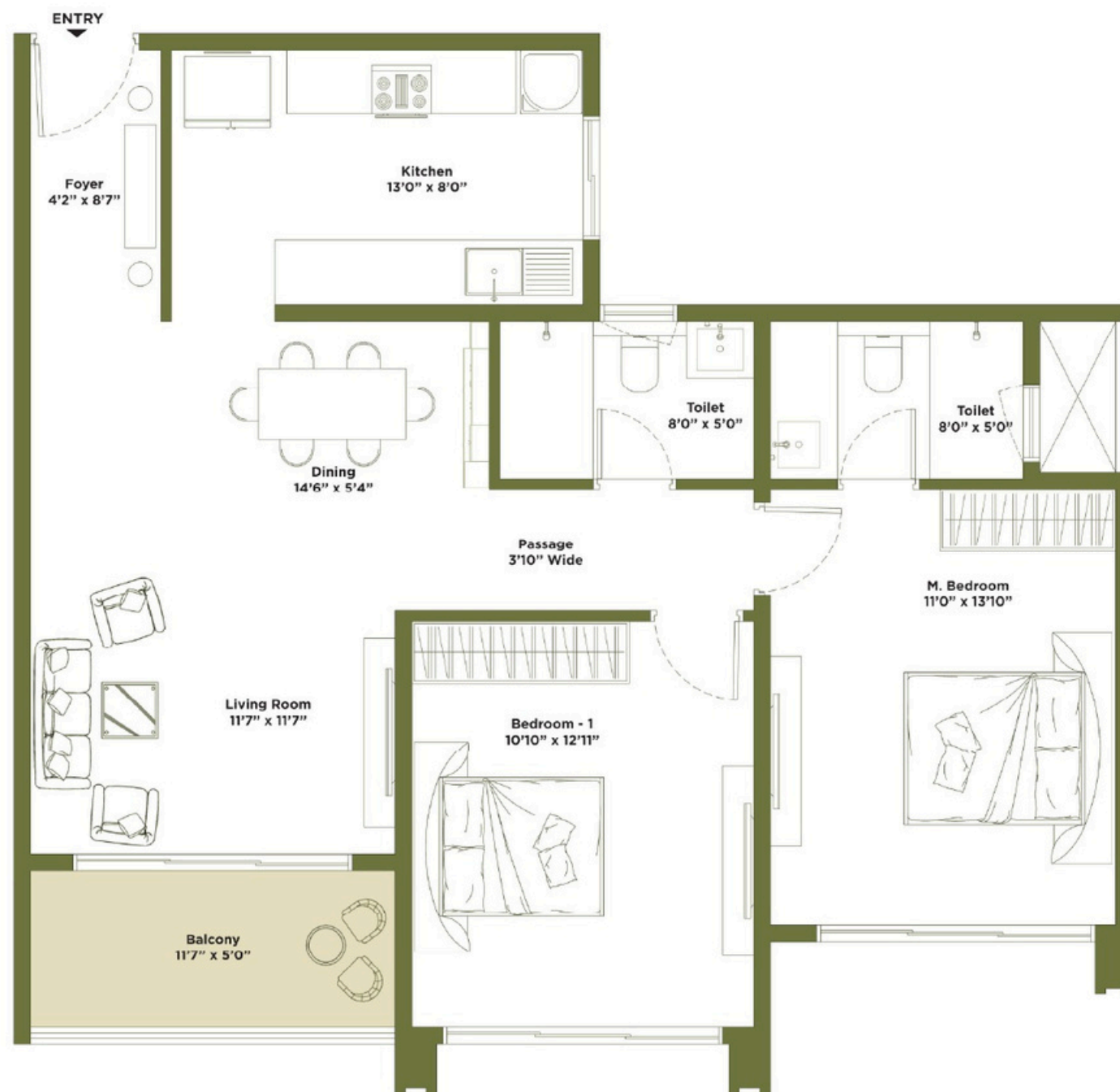
## TOWER T1, T2, T3, T5, T6, T7

### 2 BEDROOM - A1

SUPER BUILT-UP AREA: 1207.47 SQFT

CARPET AREA: 867.71 SQFT

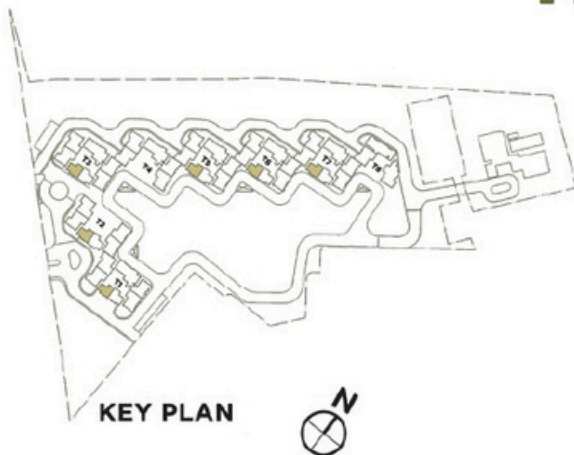
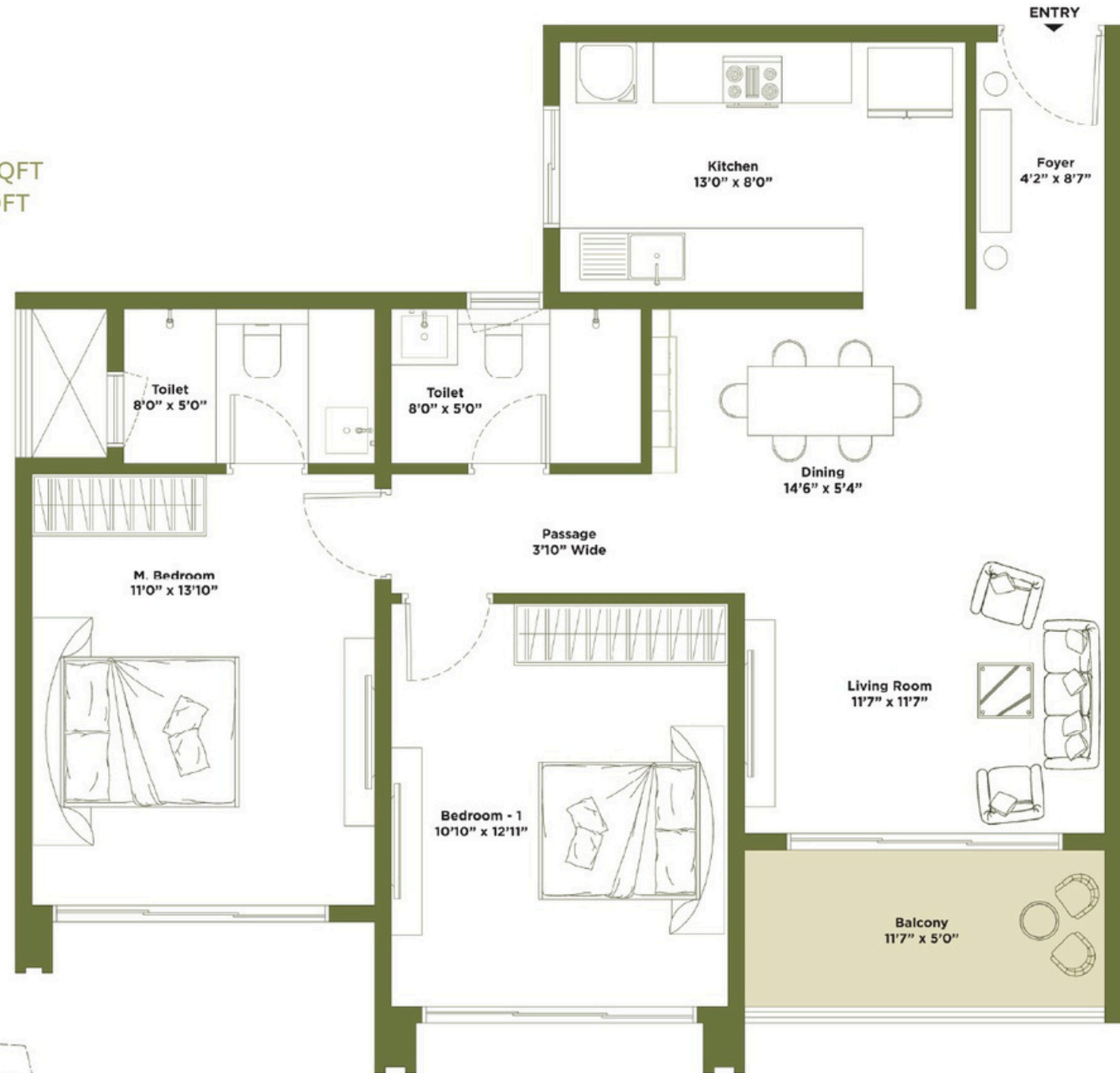
FACING: NORTH



**TOWER T1, T2, T3, T5, T6, T7**

**2 BEDROOM - A2**

SUPER BUILT-UP AREA: 1207.47 SQFT  
CARPET AREA: 867.71 SQFT  
FACING: NORTH



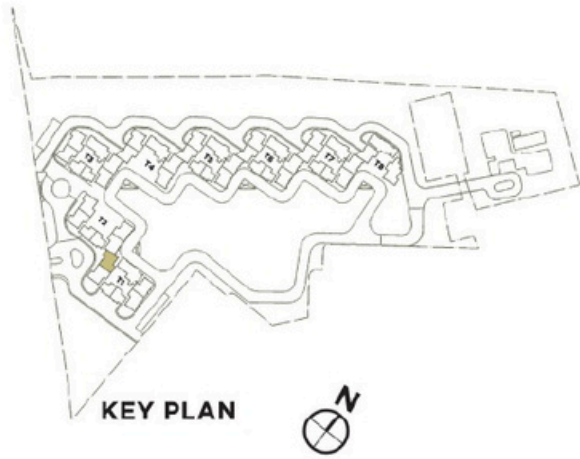
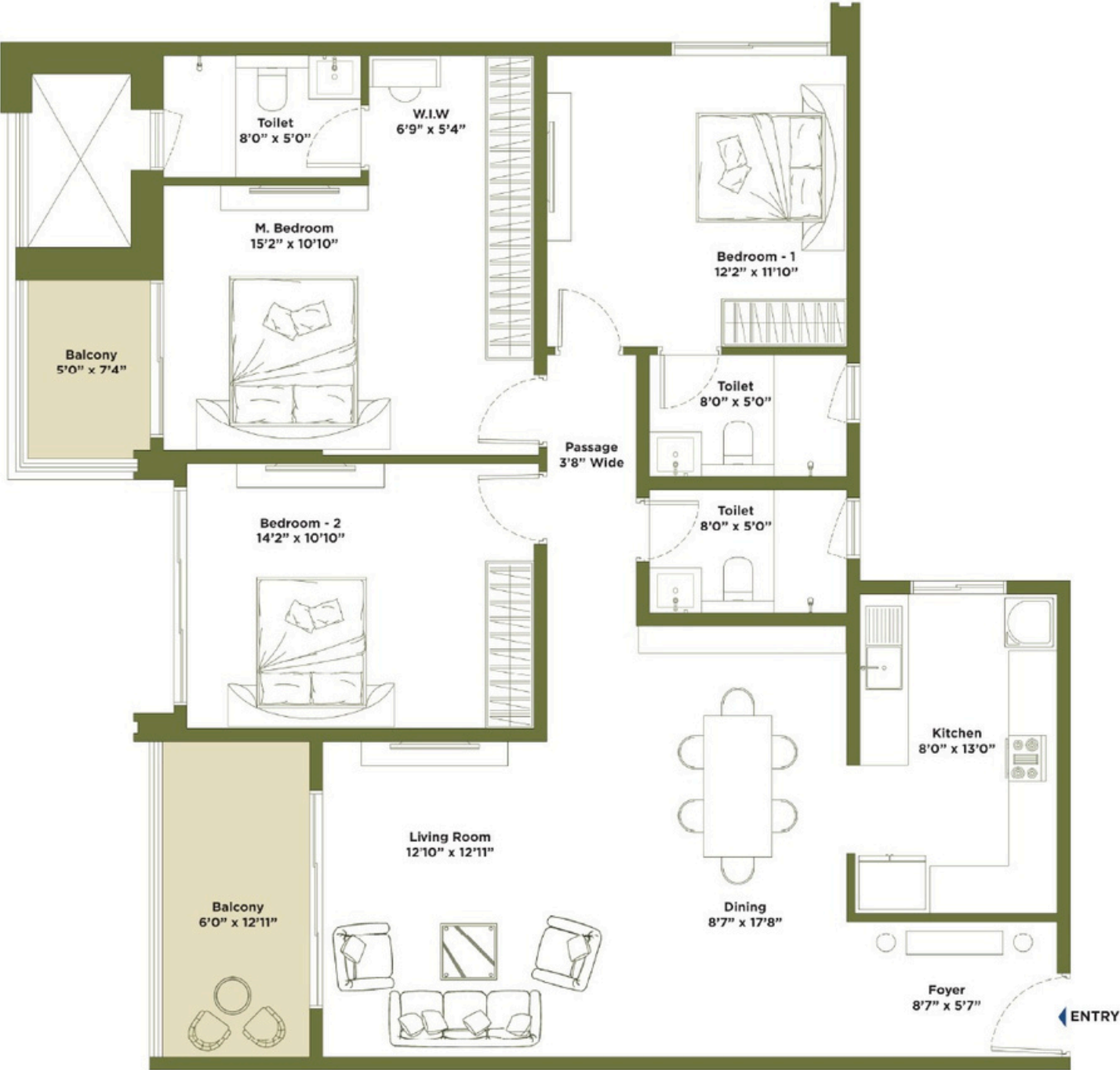
A modern living room interior featuring a beige sectional sofa with white cushions, a glass coffee table with black legs, and a large potted plant. The room has a textured wall, two pendant lights, and large windows with sheer curtains. The text "3 BHK RESIDENCES" is overlaid in the center.

# 3 BHK RESIDENCES

**TOWER T1**

**3 BEDROOM - B5**

SUPER BUILT-UP AREA: 1837.53 SQFT  
CARPET AREA: 1331.29 SQFT  
FACING: EAST



## TOWER T2

### 3 BEDROOM - B4

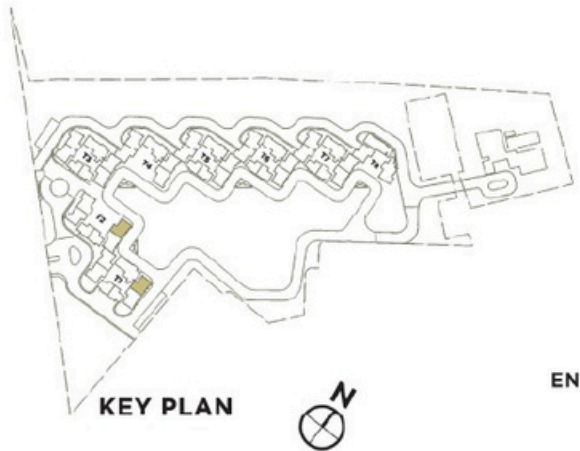
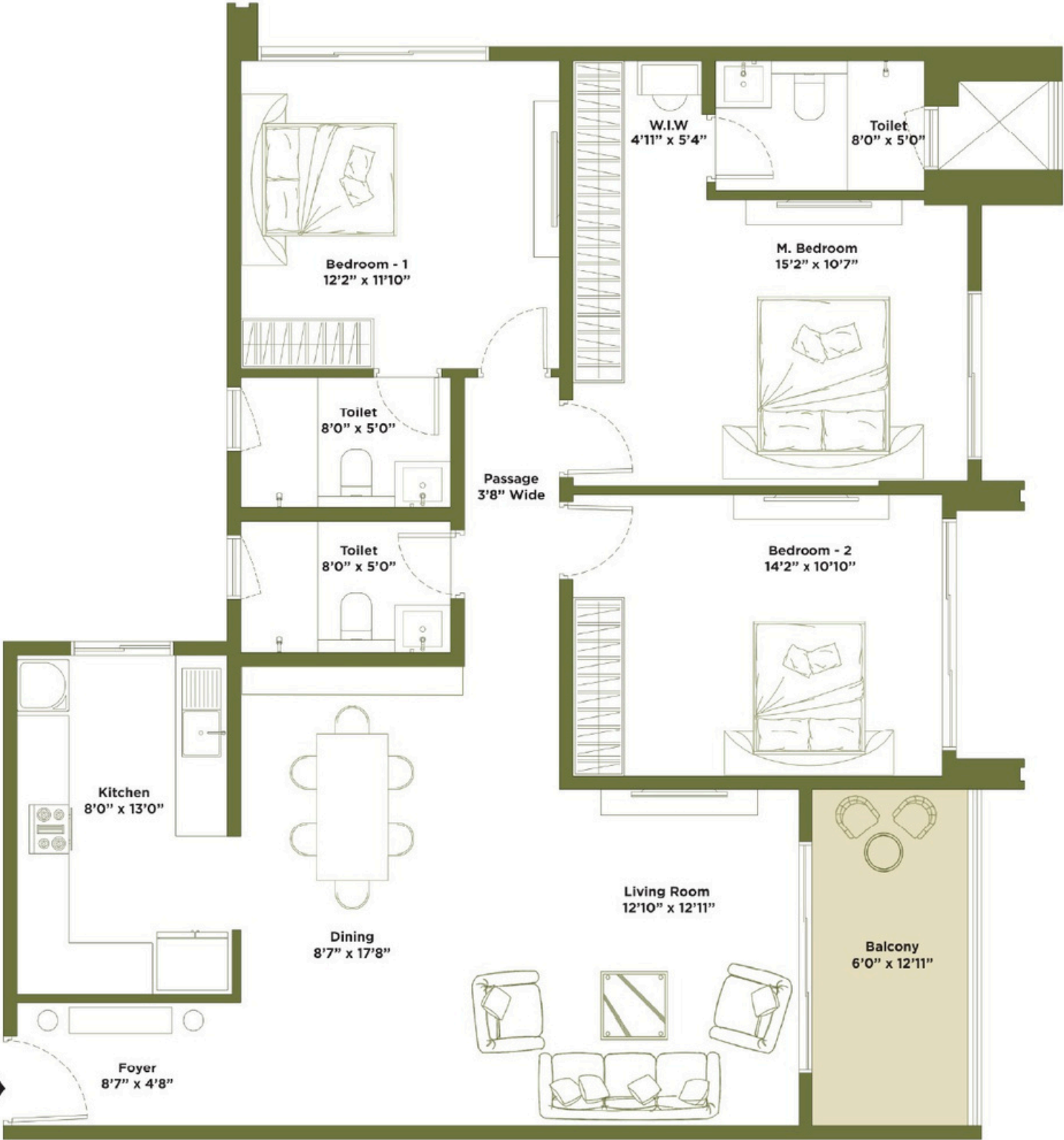
SUPER BUILT-UP AREA: 1752.64 SQFT  
CARPET AREA: 1274.44 SQFT  
FACING: WEST



**TOWER T1, T2**

**3 BEDROOM - B1**

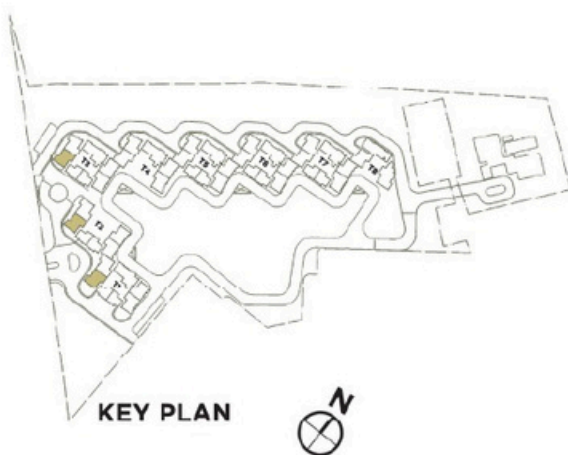
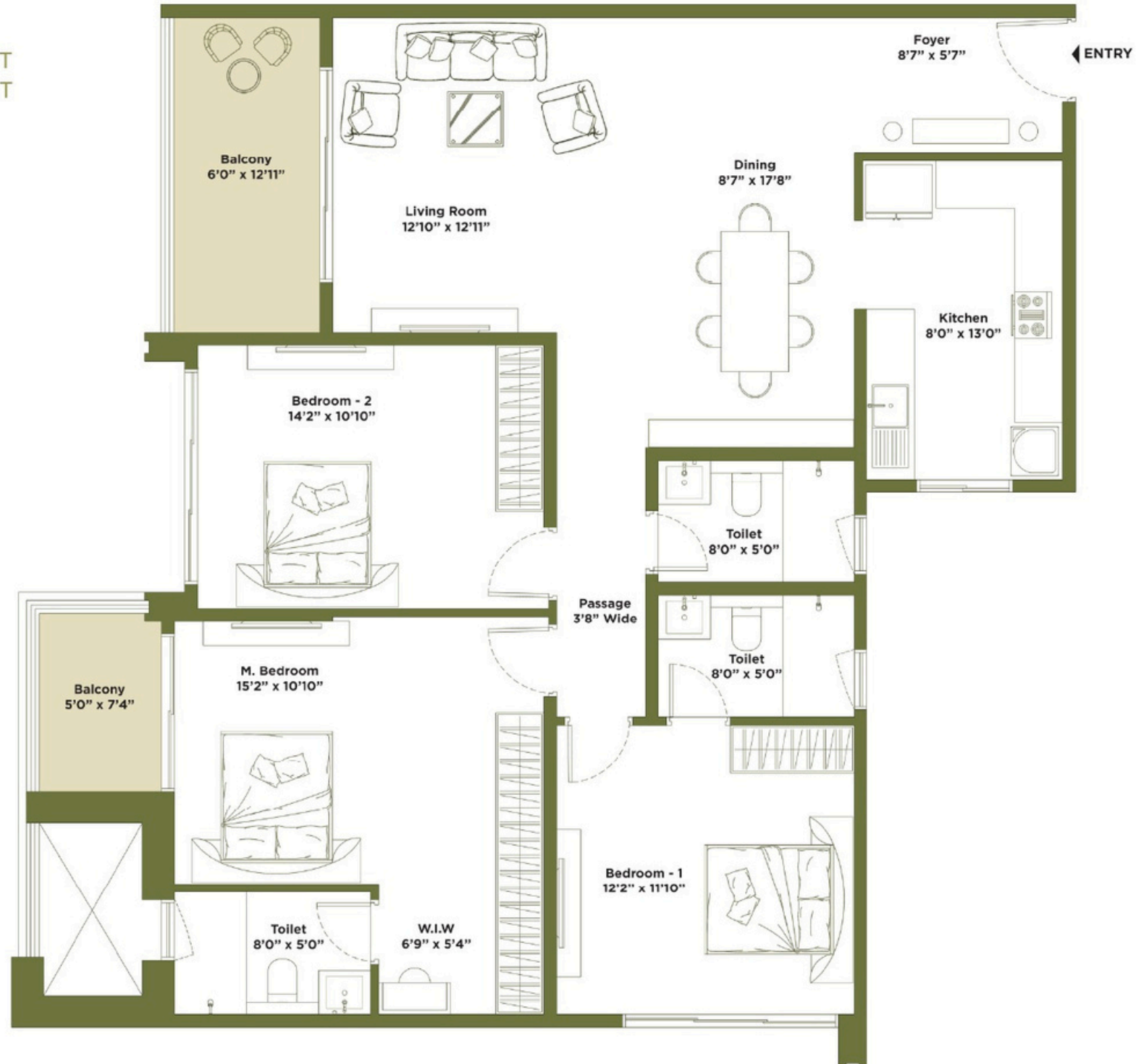
SUPER BUILT-UP AREA: 1750.30 SQFT  
CARPET AREA: 1274.44 SQFT  
FACING: WEST



## TOWER T1, T2, T3

### 3 BEDROOM - B7

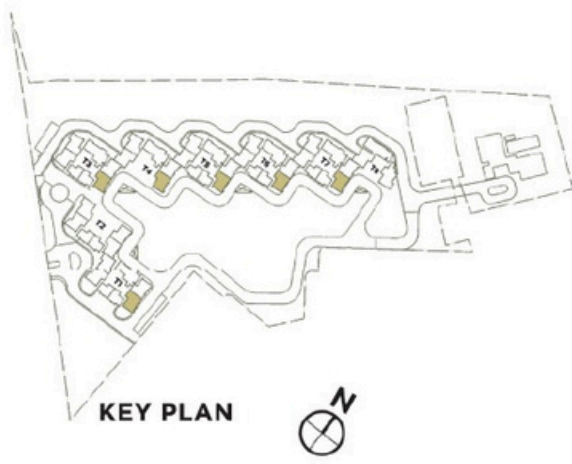
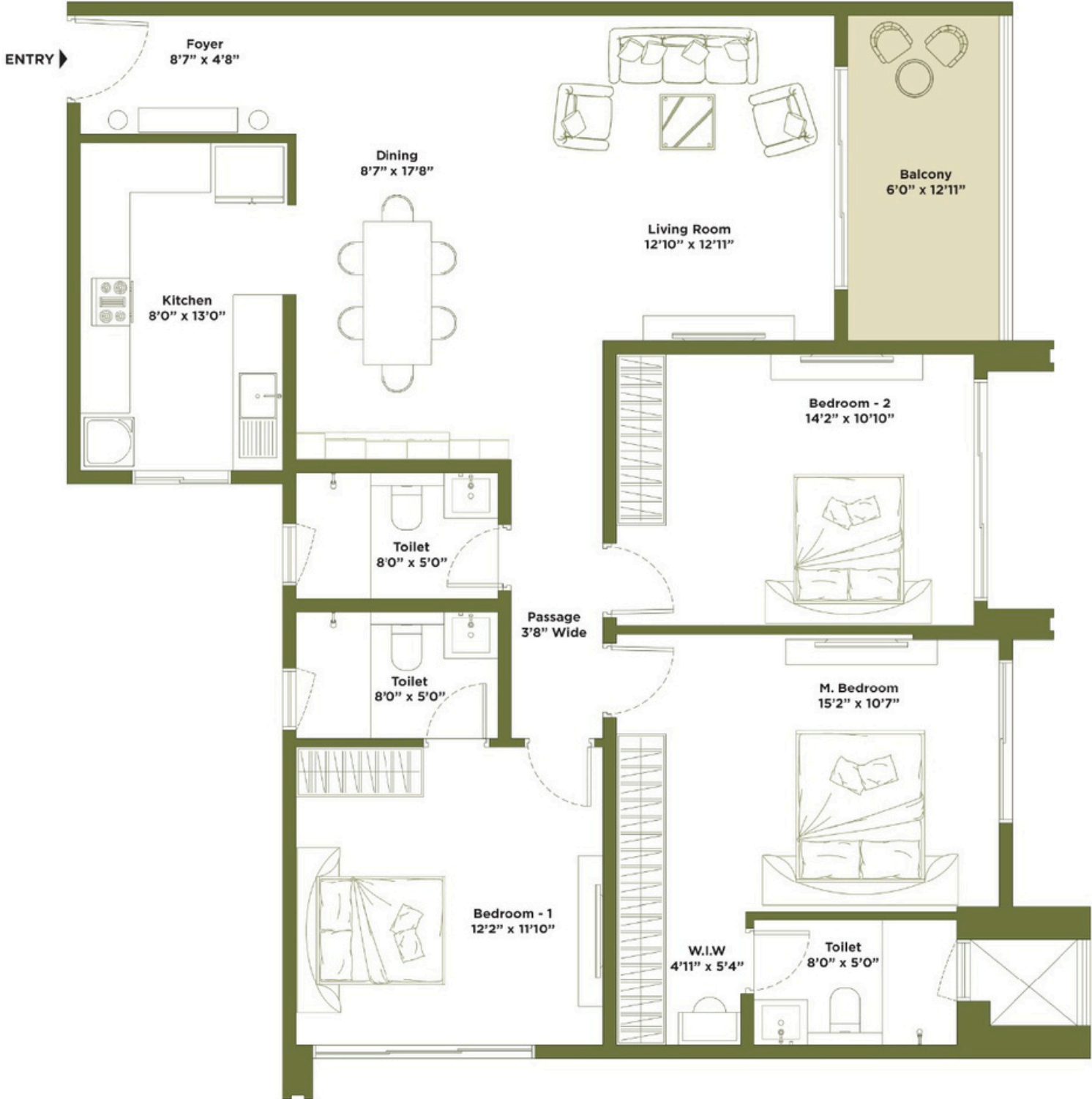
SUPER BUILT-UP AREA: 1837.53 SQFT  
CARPET AREA: 1331.29 SQFT  
FACING: EAST



TOWER T1, T3, T4, T5, T6, T7

3 BEDROOM - B3

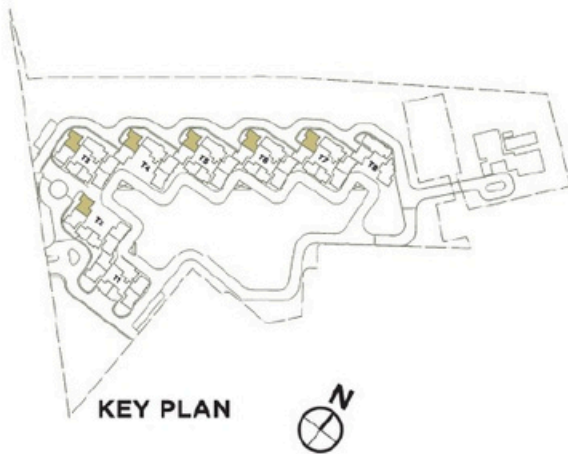
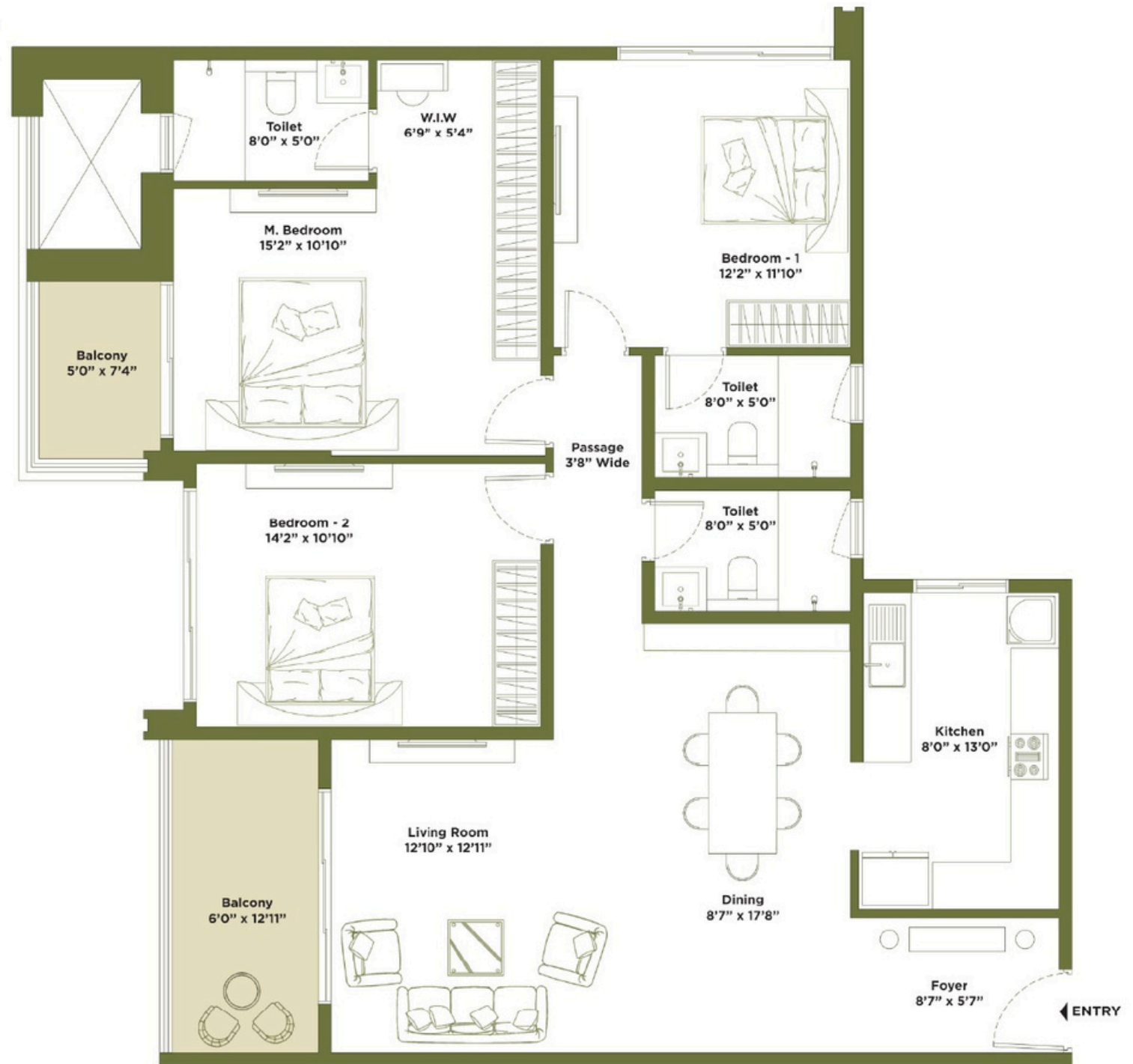
SUPER BUILT-UP AREA: 1752.64 SQFT  
CARPET AREA: 1274.44 SQFT  
FACING: WEST



## TOWER T2, T3, T4, T5, T6, T7

### 3 BEDROOM - B6

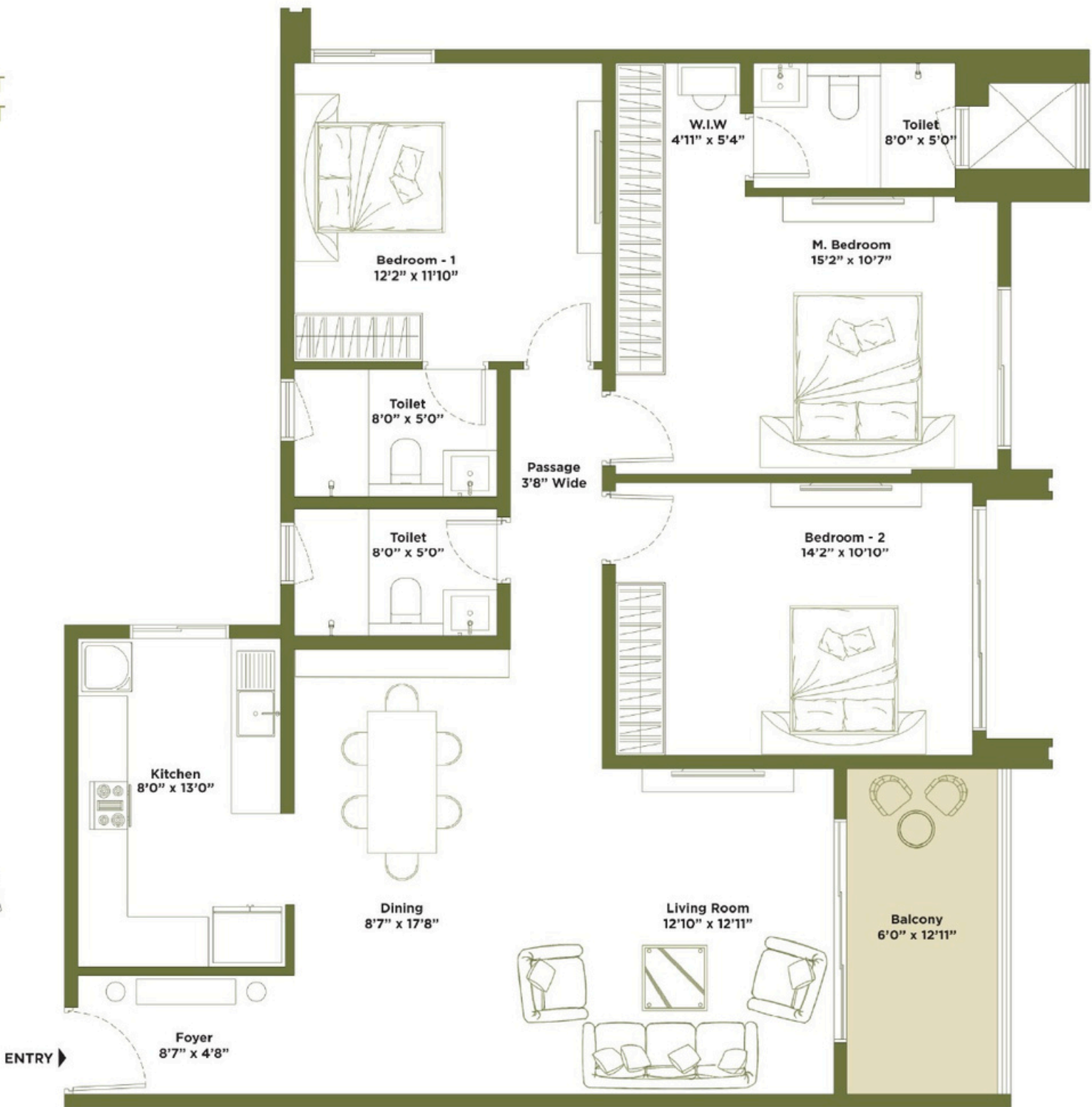
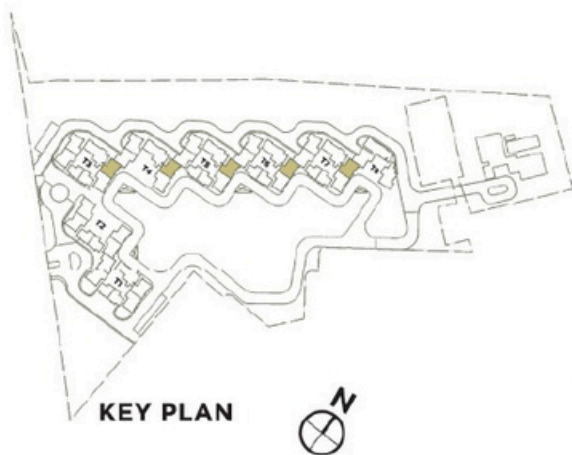
SUPER BUILT-UP AREA: 1837.53 SQFT  
CARPET AREA: 1331.29 SQFT  
FACING: EAST



TOWER T3, T4, T5, T6, T7

3 BEDROOM - B2

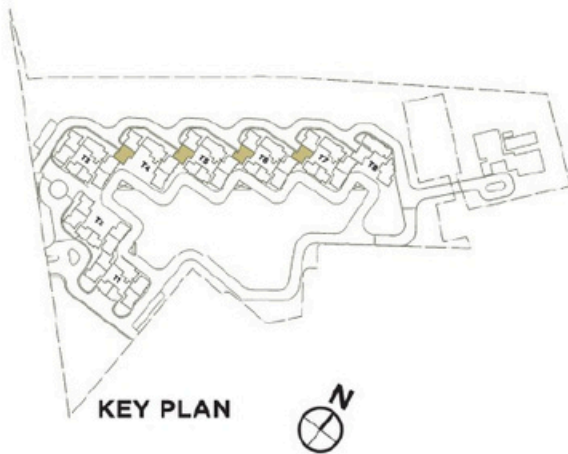
SUPER BUILT-UP AREA: 1750.30 SQFT  
CARPET AREA: 1274.44 SQFT  
FACING: WEST



## TOWER T4, T5, T6, T7

### 3 BEDROOM - B8

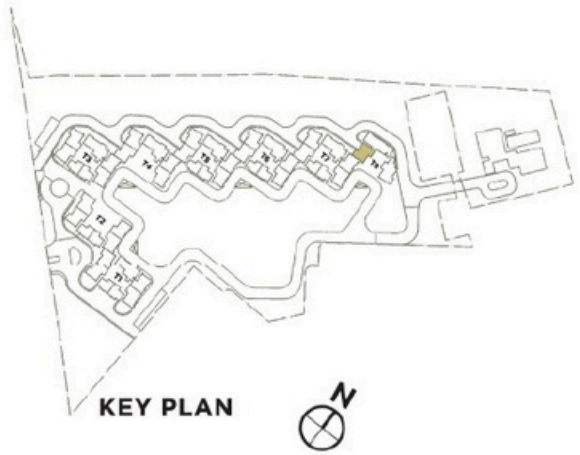
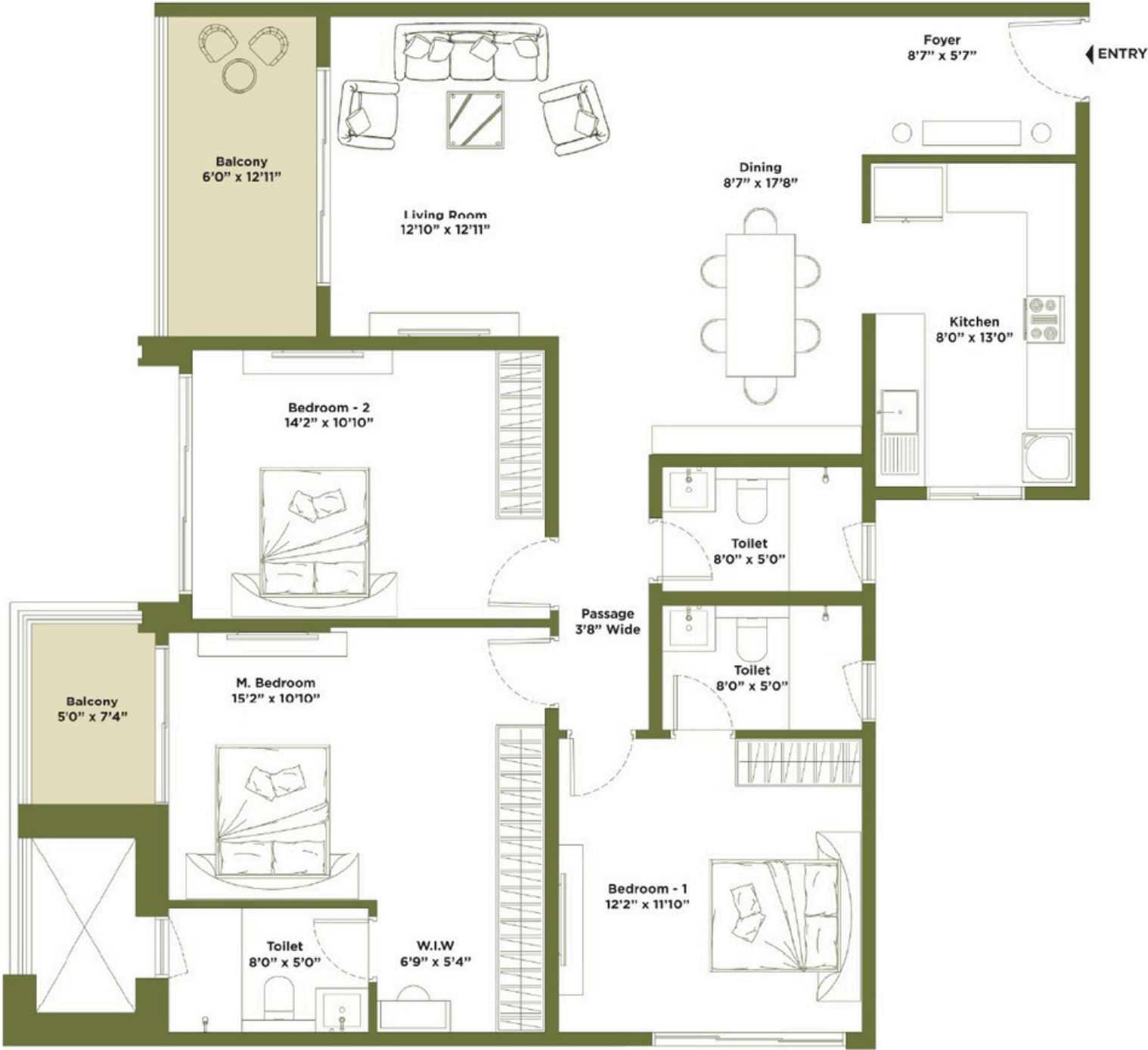
SUPER BUILT-UP AREA: 1837.53 SQFT  
CARPET AREA: 1331.29 SQFT  
FACING: EAST



**TOWER T8**

**3 BEDROOM - B9**

SUPER BUILT-UP AREA: 1836.43 SQFT  
CARPET AREA: 1331.29 SQFT  
FACING: EAST



A modern dining room with a round white marble table and six red leather chairs. A large brass vase with dried flowers sits on the table. Two pendant lights hang above the table. The background shows a glass-enclosed kitchen and a built-in shelving unit.

## 4 B H K RESIDENCES

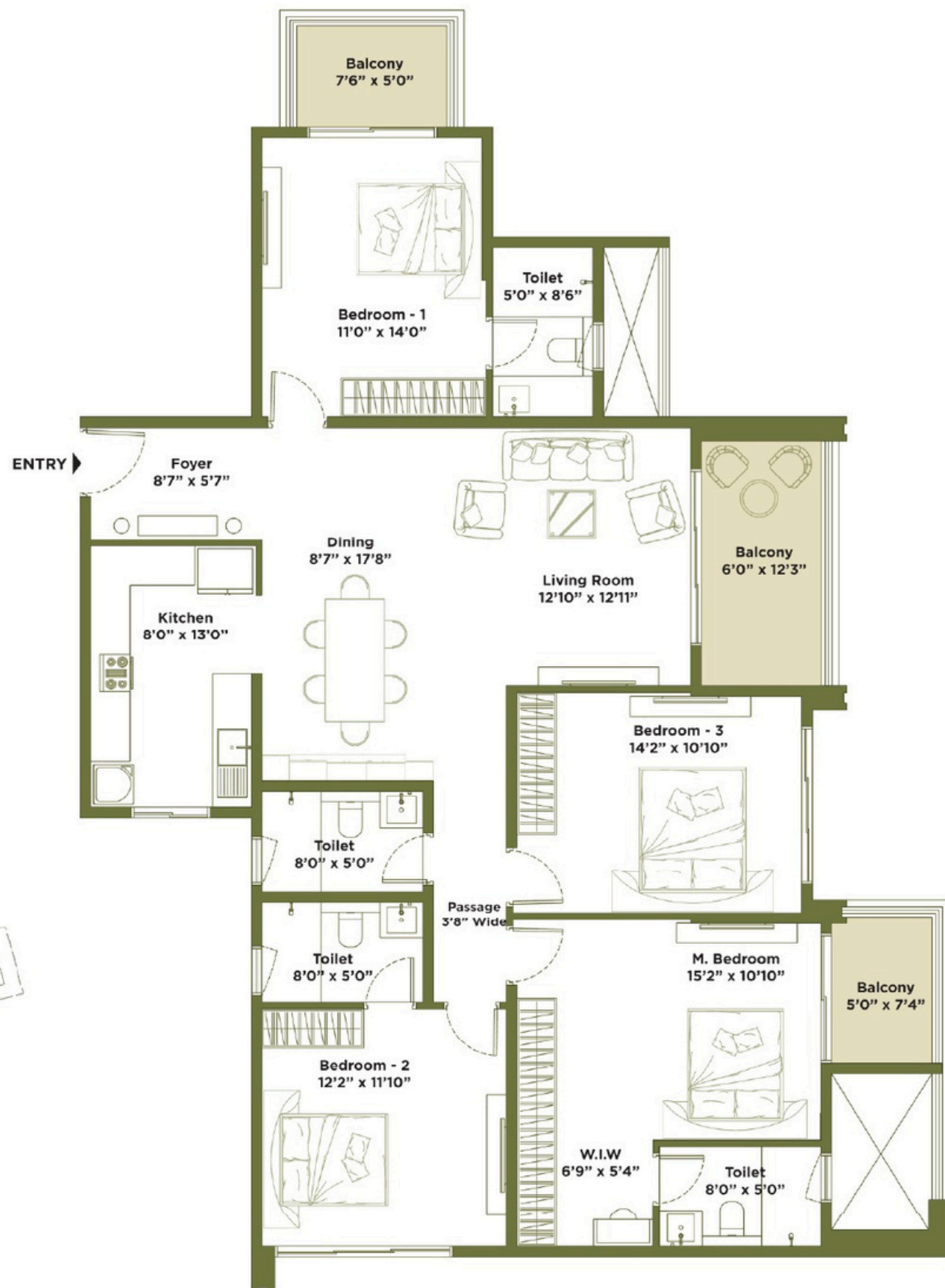
## TOWER T8

### 4 BEDROOM - C1

SUPER BUILT-UP AREA: 2203.55 SQFT

CARPET AREA: 1581.97 SQFT

FACING: WEST



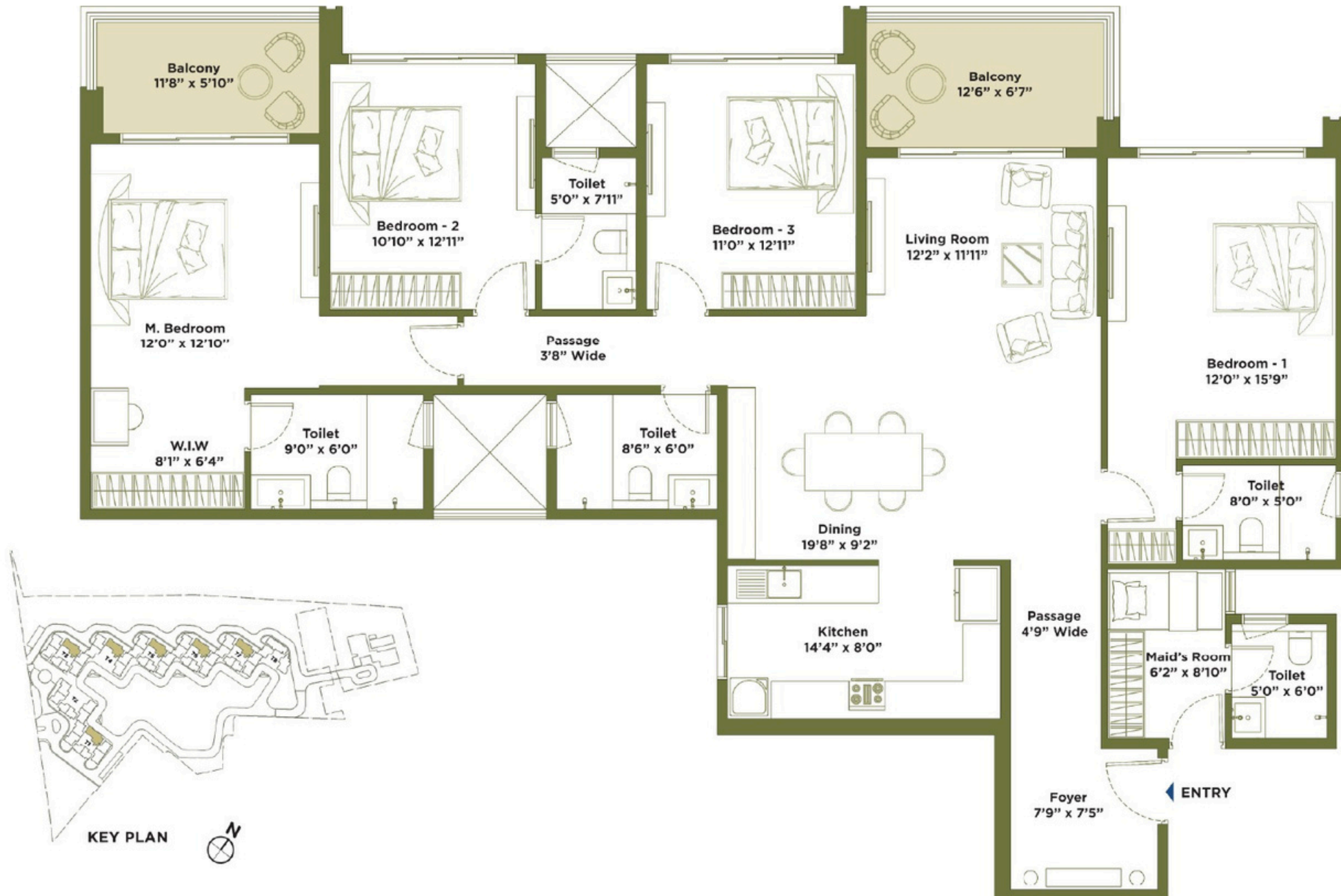
## TOWER T1, T3, T4, T5, T6, T7

### 4 BEDROOM - C2

SUPER BUILT-UP AREA: 2570.8 SQFT

CARPET AREA: 1853 SQFT

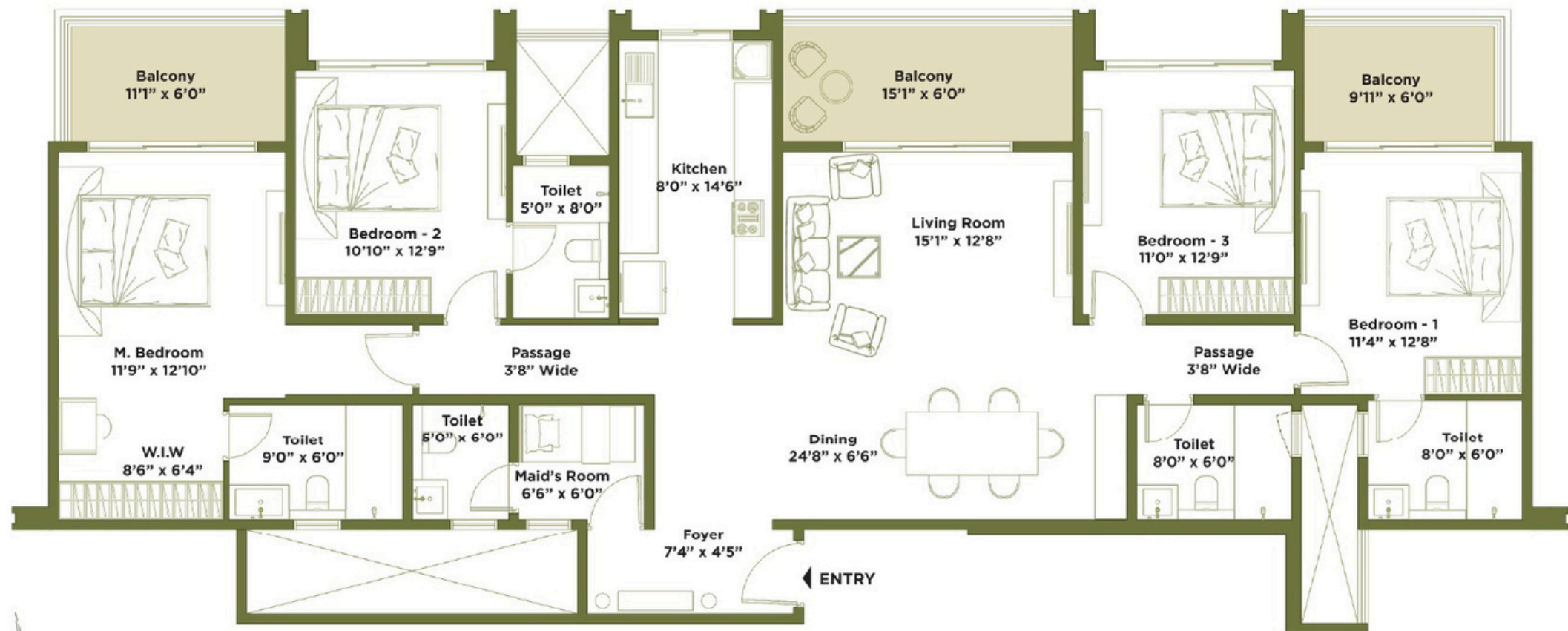
FACING: EAST



**TOWER T8**

**4 BEDROOM - C3**

SUPER BUILT-UP AREA: 2577.56 SQFT  
CARPET AREA: 1868.40 SQFT  
FACING: EAST







## Committed to the Good Life

For over three decades, Embassy Group has shaped iconic spaces across commercial, residential, hospitality, and industrial sectors in India and overseas. With over 64 million sq. ft. delivered and 28.85 million sq. ft. ongoing, the brand's legacy is built on design excellence, sustainability, and trust.

At Embassy, the promise of the 'Good Life' is more than a philosophy — it's a lived experience reflected in every project, including Embassy Greenshore.





Artist's Impression

